

Flowfast Rapid Transit SR (5mm)



Description

Flowfast Rapid Transit SR is a fast track and fire-safe acrylic resin based flooring system containing natural quartz aggregates. The system offers a joint-free and positively textured coloured floor finish with exceptional chemical, wear and slip resistance.

Uses

The system is ideal for use in areas subject to high foot and vehicular traffic where health, hygiene & fire-safety are paramount, particularly underground rail networks, warehousing and storage facilities, hospitals, health institutions and washroom areas as well as food manufacturing and processing units.

Benefits

- Rapid installation
- Good impact resistance
- Seamless hygienic finish
- Exceptional wear resistance
- Easy to clean and maintain
- High chemical resistance
- High scratch resistance
- Wear resistant surface for wheeled traffic
- Fire resistant to L.U.L. Section 12 usage
- Excellent resistance to UV light

Standard colour chart



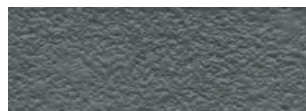
Jet Black (close to RAL 9011)



Silver Grey (close to RAL 7001)



Sky Blue (close to RAL 5051)



Blue Grey (close to RAL 7031)



Signal Yellow (close to RAL 1003)



Sand Yellow (close to RAL 1002)



Leaf Green (close to RAL 6002)

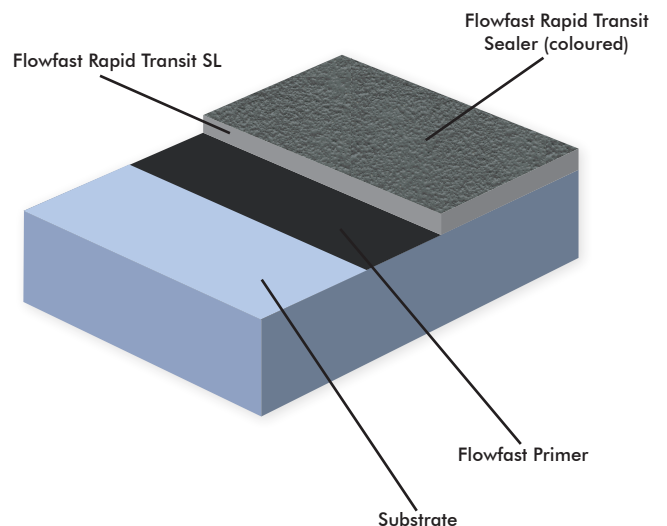


Pale Green (close to RAL 6021)



Tomato Red (close to RAL 3013)

System Design



The applied colours may differ slightly from the examples shown above. Contact our customer services for a true colour sample or a special colour match. Special corporate colours and designs can be produced to special order.

Model Specification

Product: Flowfast Rapid Transit SR

Finish: Satin matt

Thickness: _____mm (5 mm)

Colour: _____

Preparatory work and application in accordance with suppliers instructions.

Supplier: Flowcrete UK Ltd

Telephone : Customer Service - +44 (0)1270 753000

Substrate Requirements

Concrete or screed substrate should be a minimum of 25N/mm², free from laitance, dust and other contamination. The substrate should be dry to 95% RH as per BS 8204 and free from rising damp and ground water pressure.

Products Included in this System

Primer: Flowfast Standard Primer @ 0.3-0.5 kg/m²

Scatter: Natural Quartz 0.4-0.8mm scatter @ 0.3 kg/m²

Topping: Flowfast Rapid Transit SL (4mm) @ 6.7 kg/m²

Scatter: Natural Quartz 0.4-0.8mm @ 5.0 kg/m²
(to excess)

Sealer: Flowfast Rapid Transit Sealer (coloured)
@ 0.7 kg/m² (approx.)
Flowfast Rapid Transit Sealer (coloured)
@ 0.3 kg/m² (approx.)

Consult individual Product Data sheets for information on Flowfast Catalyst (hardener) levels.

Detailed application instructions are available upon request.

Installation Service

The installation should be carried out by a Flowcrete approved contractor with a documented quality assurance scheme. Obtain details of our approved contractors by contacting our customer service team or enquiring via our web site www.flowcrete.com.

Focus on the Floorzone

Flowcrete Group Ltd are world leaders in specialist industrial and commercial flooring. Systems available include: underfloor heating systems, floor screeds, surface damp proof membranes, decorative floor finishes, seamless terrazzo, car park deck waterproofing, corrosion protection systems...to name just a few.

Our objective is to satisfy your Floorzone needs.

Environmental considerations

The finished system is assessed as non-hazardous to health and the environment. The long service life and seamless surface reduce the need for repairs, maintenance and cleaning. Environmental and health considerations are controlled during manufacture and application of the products by Flowcrete staff and fully trained and experienced contractors.

Technical Information

The figures that follow are typical properties achieved in laboratory tests at 20°C and at 50% Relative Humidity.

Fire Resistance	L.U.L.. Section 12
Slip Resistance	
Method described in BS 7976-2	Dry >40 low slip potential
(typical values for 4-S rubber slider)	(in accordance with HSE and UKSRG guidelines)
The slipperiness of flooring materials can change significantly, due to the installation process, after short periods of use, due to inappropriate maintenance, longer-term wear and/or surface contaminants (wet or dry). Textured systems are recommended to meet slip resistance value requirements for wet conditions and/or surface contaminants (wet or dry) - please contact our Technical Advisors for further details and specifications.	
Temperature Resistance	Tolerant of sustained temperatures up to 50°C
Water Permeability	Nil – Karsten test (impermeable)
Chemical Resistance	Good resistance to tea, coffee, cola, fruit juice, soaps and bleach
Compressive Strength	>40 N/mm ²
Flexural Strength	>20 N/mm ²
Bond Strength	Greater than cohesive strength of 25 N/mm ² concrete. >1.5 MPa.

Complies with BS 8204-6/FeRFA type 4.

Speed of Cure (per layer)

Full traffic	1 hour
Full chemical cure	1 hour

For applications below 0°C or above 30°C, please consult our Technical Department.

Aftercare - Cleaning and Maintenance

Clean regularly using a single or double headed rotary scrubber drier in conjunction with a neutral or mildly alkaline detergent (without solvents).

Important Note

Flowcrete's products are guaranteed against defective materials and manufacture and are sold subject to its standard Terms and Conditions of Sale, copies of which can be obtained on request.

Further Information

To ensure you are specifying a fit for purpose flooring system for your project please consult our Technical Advisors on the number below or visit our website to register your interest in specifying one of the most durable floors on the market.